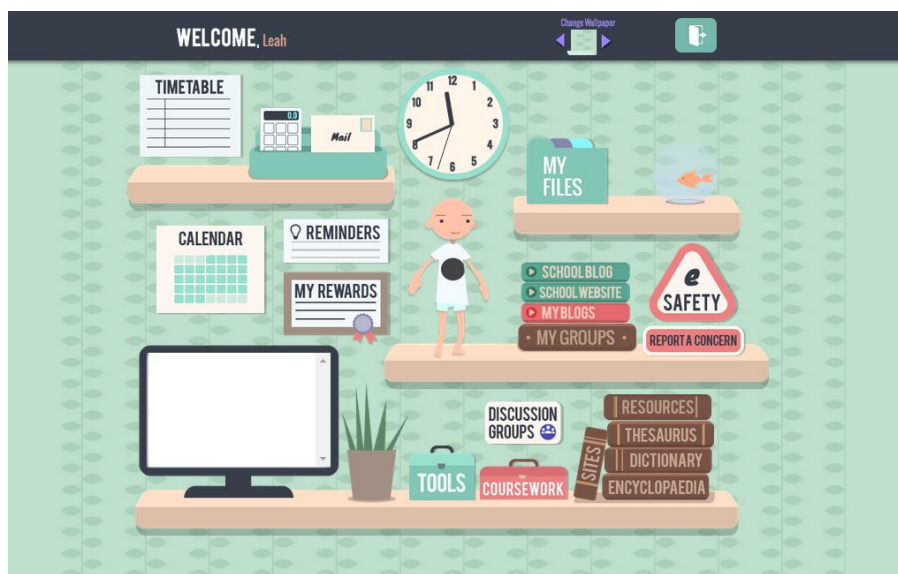





Accessing and Using School360 – Felton C of E First School

As we launch School360 in school, we have decided to only use certain features initially. School360 does offer behaviour management systems, class registration and e-mailing capabilities and we may explore these at a later date.

To access School360, you can use the direct link on the school website. Alternatively, you can visit the Northumberland VTLE website (the same place you accessed old NorTLE from).

After logging in with your unique username and password, you will see the new dashboard. Below there is an overview of the sections we will initially be looking to use:



	Really handy for finding online resources. Simply enter the subject, key stage and you will be provided with a list of resources that you can use. Search keywords like 'subtract' to refine your search too.
	A terrific resource to get the children researching in a controlled way, rather than letting them loose onto Google. Most entries have differentiated reading levels.
	Clicking here gives access to IAMLearning. It will be possible for children staff to set homework tasks for children to access using IAMLearning. There is a separate tutorial sheet on how to use IAMLearning. You will also find J2e here. This has similar activities to those found on Purple Mash.